

How can you securely seal pipes in the wall ?



BAD SEALING



CAUSES OF THE WATER INGRESS

- ⊖ **Sealing material** (foam) not form and aging-resistant during the course of time **the feedthrough will become leaky**
- ⊖ **No adhesion on PE and PP!**
- ⊖ **No axial movement/tendency allowed**



GOOD SEALING

SEALING SOLUTION FROM DOYMA

- ⊕ **Annular gap** is permanently **sealed against** water and gas
- ⊕ **25-year warranty** on **DOYMA gasket insert**
- ⊕ **Simple, fast** and **safe installation**
- ⊕ **Axial movements** and **angles** are possible

BASICS

PRINCIPLE OF SAFE SEALS

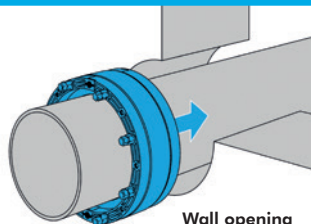
The basic principle is simple:
If a media line is to be routed
through a wall opening, the annular
gap must be securely sealed against
water (and possibly gas).

1 COMPONENTS

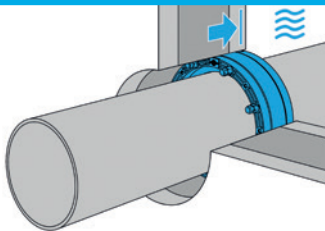
Gasket insert

Pipe or cable
(media line)

Wall opening
(with pipe sleeve)

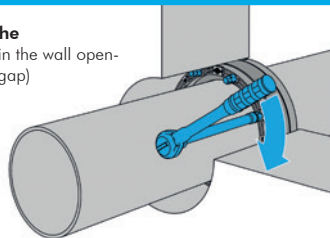


2 INSERT



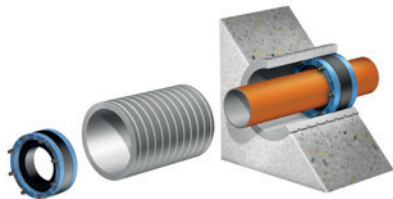
3 ASSEMBLY

Sealing of the
media line in the wall opening
(annular gap)

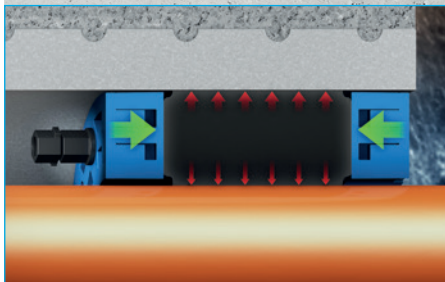


BASICS

EFFECT OF SEALING



Combination of pipe sleeve and gasket insert
for the optimal use in a concrete wall (core boring)



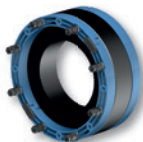
Effect of a rubber pressure seal



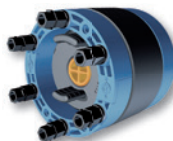
The ITL (Integrated Torque Limiter) always guarantees the correct torque during the tightening. Special tools are not required (cordless screwdriver).

Sealing systems from DOYMA.

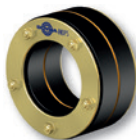
Just simply safe.



Curaflex Nova® Uno



Curaflex Nova® Multi



Curaflex® C



DOYMA GmbH & Co
SEALING SYSTEMS
FIRE PROTECTION SYSTEMS

Industriestr. 43-57
28876 Oyten

Phone +49 42 07/91 66-550
Fax +49 42 07/91 66-199

info@doyma.com
www.doyma.com



For more detailed
information please
visit our website